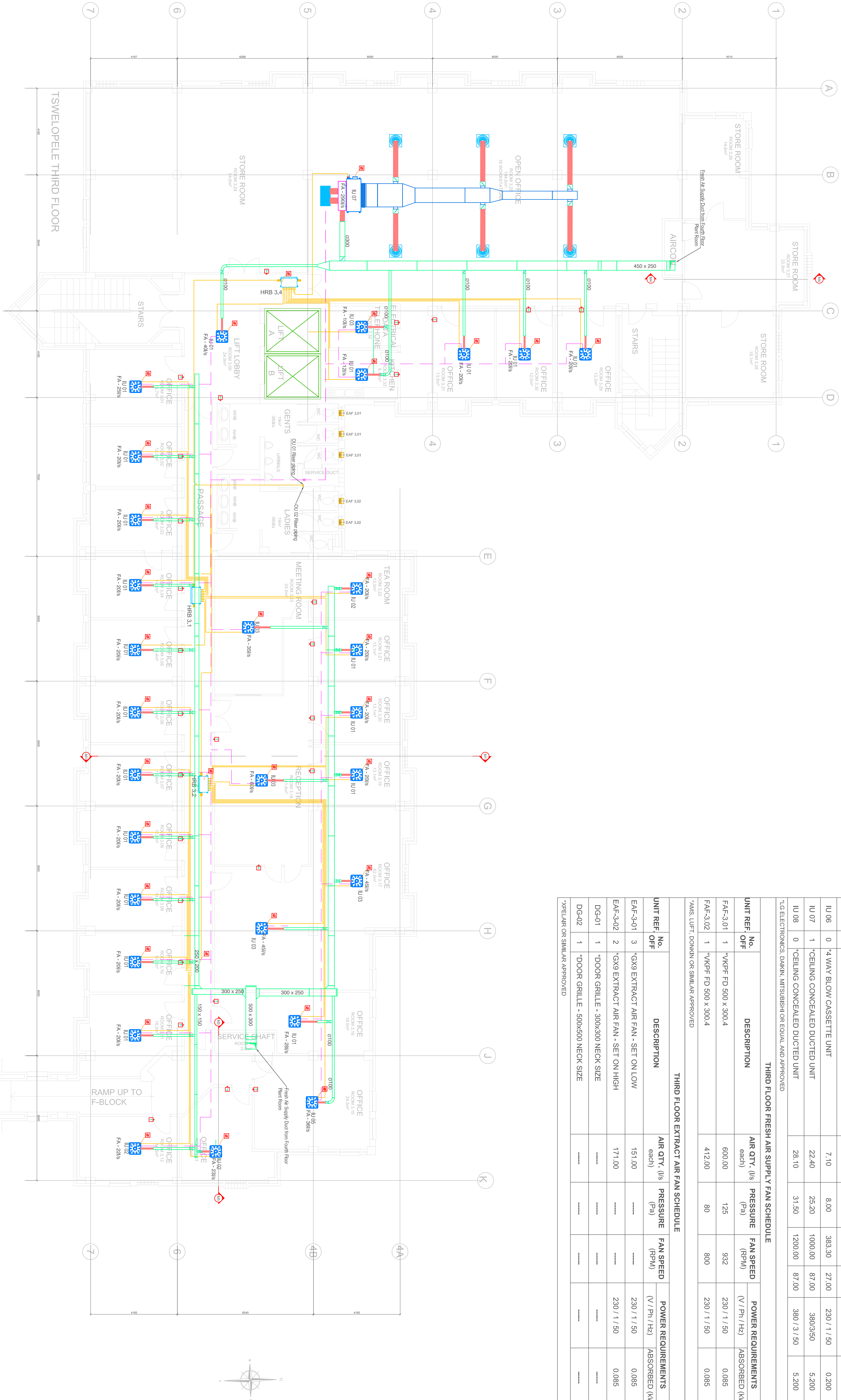


THIRD FLOOR INTERNAL TERMINAL UNIT SCHEDULE						
UNIT REF.	No. OFF	DESCRIPTION	COOLING CAPACITY (kW)	HEATING CAPACITY (kW)	AIR QTY. (l/s Each)	MASS (kg)
IU 01	20	*4 WAY BLOW CASSETTE UNIT	2.20	2.50	125.00	12.60
IU 02	3	*4 WAY BLOW CASSETTE UNIT	2.80	3.20	133.30	13.70
IU 03	5	*4 WAY BLOW CASSETTE UNIT	3.60	4.00	145.00	13.70
IU 04	0	*4 WAY BLOW CASSETTE UNIT	4.50	5.00	183.30	15.00
IU 05	1	*4 WAY BLOW CASSETTE UNIT	5.60	6.30	187.00	15.00
IU 06	0	*4 WAY BLOW CASSETTE UNIT	7.10	8.00	383.30	27.00
IU 07	1	*CEILING CONCEALED DUCTED UNIT	22.40	25.20	1000.00	87.00
IU 08	0	*CEILING CONCEALED DUCTED UNIT	28.10	31.50	1200.00	87.00
*LG ELECTRONICS: DAIKIN, MITSUBISHI OR EQUAL AND APPROVED						
THIRD FLOOR FRESH AIR SUPPLY FAN SCHEDULE						
UNIT REF.	No. OFF	DESCRIPTION	AIR QTY. (l/s each)	PRESSURE (Pa)	FAN SPEED (RPM)	POWER REQUIREMENTS (V / Ph / Hz) (ABSORBED (kW)
FAF-3-01	1	*VAPF FD 500 x 300.4	600.00	125	932	230 / 1 / 50 0.085
FAF-3-02	1	*VAPF FD 500 x 300.4	412.00	80	800	230 / 1 / 50 0.085
*VMS LIFT, DOWN OR SIMILAR APPROVED						
THIRD FLOOR EXTRACT AIR FAN SCHEDULE						
UNIT REF.	No. OFF	DESCRIPTION	AIR QTY. (l/s each)	PRESSURE (Pa)	FAN SPEED (RPM)	POWER REQUIREMENTS (V / Ph / Hz) (ABSORBED (kW)
EAF-3-01	3	*GX9 EXTRACT AIR FAN - SET ON LOW	151.00	-----	-----	230 / 1 / 50 0.085
EAF-3-02	2	*GX9 EXTRACT AIR FAN - SET ON HIGH	171.00	-----	-----	230 / 1 / 50 0.085
DG-01	1	*DOOR GRILLE - 300x300 NECK SIZE	-----	-----	-----	-----
DG-02	1	*DOOR GRILLE - 500x500 NECK SIZE	-----	-----	-----	-----
*PELAP OR SIMILAR APPROVED						



ALL DIMENSIONS AND HEIGHTS ARE TO BE CHECKED ON SITE BEFORE WORK BEGINS. ALL WORK AND MATERIAL ARE TO COMPLY TO RELEVANT SABS CODES WHERE APPLICABLE. BRAND NAMES INDICATE SUGGESTED BRANDS, BUT NOT EXCLUSIVELY APPROVED.

ALL WORK TO BE IN ACCORDANCE TO SABS. REPORT DISCREPANCIES TO ARCHITECT OR ENGINEER.

GENERAL NOTES:
• ALL DIMENSIONS TO BE CHECKED ON SITE BEFORE ANY WORK IS PUT IN.
• HANGWORK TO COMPLY TO LOCAL MUNICIPAL BY-LAWS.
• HVAC SUB-CONTRACTOR IS RESPONSIBLE TO ENSURE ALL CO-ORDINATION WITH OTHER TRADES PRIOR TO PROCEEDING WITH INSTALLATION.
• SPECIFICATIONS MUST BE ADHERED TO ALL STANDARDS AS PER TENDER DOCUMENTS.

HVAC NOTES:
1. HANGWORK FORMS PART OF THE SPECIFICATION AND MUST BE READ IN CONJUNCTION WITH THE SAME.
2. ALL DUCTWORK TO BE HANGWORKED IN ACCORDANCE WITH SABS.
3. ALL DUCT SIZES SHOWN ARE ACTUAL SHEETMETAL SIZES.
4. SPLIT DUCTS TO BE EXTERNALLY INSULATED WITH 25mm FRK.
5. ALL EXPOSED DUCTS TO BE UNINSULATED, UNLESS SPECIFIED.
6. ALL OTHER DUCTS TO BE PAINTED TO SPECIFICATION.
7. JOINTS AND DUCTS ABOVE TO BE MEZZ FLANGED.
8. ALL ROUND DUCT BENDS UP TO 90DEGREE TO HAVE A RADIUS OF 150mm AND FLANGED BENDS UP TO 90DEGREE TO HAVE A RADIUS OF 200mm.
9. OVER 90DEGREE TO HAVE A RADIUS OF 300mm.
10. SPLICED TO BE 100mm LONG, UNLESS OTHERWISE STATED.

HVAC RUL PERSONNEL:
12. ALL OPENINGS TO BE 100mm BIGGER THAN DUCT SIZES SHOWN (BUILDER TO MAKE GOOD AFTER DUCTS ARE INSTALLED).
13. ALL OPENINGS TO BE 100mm BIGGER THAN DUCT SIZES SHOWN (BUILDER TO MAKE GOOD AFTER DUCTS ARE INSTALLED).
14. TO MAKE GOOD AFTER DUCTS ARE INSTALLED.
15. TO MAKE GOOD AFTER DUCTS ARE INSTALLED.
16. TO MAKE GOOD AFTER DUCTS ARE INSTALLED.
17. TO MAKE GOOD AFTER DUCTS ARE INSTALLED.
18. TO MAKE GOOD AFTER DUCTS ARE INSTALLED.
19. TO MAKE GOOD AFTER DUCTS ARE INSTALLED.
20. TO MAKE GOOD AFTER DUCTS ARE INSTALLED.

LEGEND:
1. EXTRACT AIR DIFFUSER OR GRILLE
2. TRANSFER GRILLE
3. WEATHER LOUVER
4. MEASURE ON SITE
5. NOT TO SCALE
6. TRANSFORMATION OF DUCT
7. WIRE MESH SCREEN
8. COMBES WITH
9. DOOR GRILLE
10. EXTRACT AIR DIFFUSER OR GRILLE
11. TRANSFER GRILLE
12. WEATHER LOUVER
13. MEASURE ON SITE
14. NOT TO SCALE
15. TRANSFORMATION OF DUCT
16. WIRE MESH SCREEN
17. COMBES WITH
18. DOOR GRILLE
19. EXTRACT AIR DIFFUSER OR GRILLE
20. TRANSFER GRILLE
21. WEATHER LOUVER
22. MEASURE ON SITE
23. NOT TO SCALE
24. TRANSFORMATION OF DUCT
25. WIRE MESH SCREEN
26. COMBES WITH
27. DOOR GRILLE
28. EXTRACT AIR DIFFUSER OR GRILLE
29. TRANSFER GRILLE
30. WEATHER LOUVER
31. MEASURE ON SITE
32. NOT TO SCALE
33. TRANSFORMATION OF DUCT
34. WIRE MESH SCREEN
35. COMBES WITH
36. DOOR GRILLE
37. EXTRACT AIR DIFFUSER OR GRILLE
38. TRANSFER GRILLE
39. WEATHER LOUVER
40. MEASURE ON SITE
41. NOT TO SCALE
42. TRANSFORMATION OF DUCT
43. WIRE MESH SCREEN
44. COMBES WITH
45. DOOR GRILLE
46. EXTRACT AIR DIFFUSER OR GRILLE
47. TRANSFER GRILLE
48. WEATHER LOUVER
49. MEASURE ON SITE
50. NOT TO SCALE
51. TRANSFORMATION OF DUCT
52. WIRE MESH SCREEN
53. COMBES WITH
54. DOOR GRILLE
55. EXTRACT AIR DIFFUSER OR GRILLE
56. TRANSFER GRILLE
57. WEATHER LOUVER
58. MEASURE ON SITE
59. NOT TO SCALE
60. TRANSFORMATION OF DUCT
61. WIRE MESH SCREEN
62. COMBES WITH
63. DOOR GRILLE
64. EXTRACT AIR DIFFUSER OR GRILLE
65. TRANSFER GRILLE
66. WEATHER LOUVER
67. MEASURE ON SITE
68. NOT TO SCALE
69. TRANSFORMATION OF DUCT
70. WIRE MESH SCREEN
71. COMBES WITH
72. DOOR GRILLE
73. EXTRACT AIR DIFFUSER OR GRILLE
74. TRANSFER GRILLE
75. WEATHER LOUVER
76. MEASURE ON SITE
77. NOT TO SCALE
78. TRANSFORMATION OF DUCT
79. WIRE MESH SCREEN
80. COMBES WITH
81. DOOR GRILLE
82. EXTRACT AIR DIFFUSER OR GRILLE
83. TRANSFER GRILLE
84. WEATHER LOUVER
85. MEASURE ON SITE
86. NOT TO SCALE
87. TRANSFORMATION OF DUCT
88. WIRE MESH SCREEN
89. COMBES WITH
90. DOOR GRILLE
91. EXTRACT AIR DIFFUSER OR GRILLE
92. TRANSFER GRILLE
93. WEATHER LOUVER
94. MEASURE ON SITE
95. NOT TO SCALE
96. TRANSFORMATION OF DUCT
97. WIRE MESH SCREEN
98. COMBES WITH
99. DOOR GRILLE
100. EXTRACT AIR DIFFUSER OR GRILLE
101. TRANSFER GRILLE
102. WEATHER LOUVER
103. MEASURE ON SITE
104. NOT TO SCALE
105. TRANSFORMATION OF DUCT
106. WIRE MESH SCREEN
107. COMBES WITH
108. DOOR GRILLE
109. EXTRACT AIR DIFFUSER OR GRILLE
110. TRANSFER GRILLE
111. WEATHER LOUVER
112. MEASURE ON SITE
113. NOT TO SCALE
114. TRANSFORMATION OF DUCT
115. WIRE MESH SCREEN
116. COMBES WITH
117. DOOR GRILLE
118. EXTRACT AIR DIFFUSER OR GRILLE
119. TRANSFER GRILLE
120. WEATHER LOUVER
121. MEASURE ON SITE
122. NOT TO SCALE
123. TRANSFORMATION OF DUCT
124. WIRE MESH SCREEN
125. COMBES WITH
126. DOOR GRILLE
127. EXTRACT AIR DIFFUSER OR GRILLE
128. TRANSFER GRILLE
129. WEATHER LOUVER
130. MEASURE ON SITE
131. NOT TO SCALE
132. TRANSFORMATION OF DUCT
133. WIRE MESH SCREEN
134. COMBES WITH
135. DOOR GRILLE
136. EXTRACT AIR DIFFUSER OR GRILLE
137. TRANSFER GRILLE
138. WEATHER LOUVER
139. MEASURE ON SITE
140. NOT TO SCALE
141. TRANSFORMATION OF DUCT
142. WIRE MESH SCREEN
143. COMBES WITH
144. DOOR GRILLE
145. EXTRACT AIR DIFFUSER OR GRILLE
146. TRANSFER GRILLE
147. WEATHER LOUVER
148. MEASURE ON SITE
149. NOT TO SCALE
150. TRANSFORMATION OF DUCT
151. WIRE MESH SCREEN
152. COMBES WITH
153. DOOR GRILLE
154. EXTRACT AIR DIFFUSER OR GRILLE
155. TRANSFER GRILLE
156. WEATHER LOUVER
157. MEASURE ON SITE
158. NOT TO SCALE
159. TRANSFORMATION OF DUCT
160. WIRE MESH SCREEN
161. COMBES WITH
162. DOOR GRILLE
163. EXTRACT AIR DIFFUSER OR GRILLE
164. TRANSFER GRILLE
165. WEATHER LOUVER
166. MEASURE ON SITE
167. NOT TO SCALE
168. TRANSFORMATION OF DUCT
169. WIRE MESH SCREEN
170. COMBES WITH
171. DOOR GRILLE
172. EXTRACT AIR DIFFUSER OR GRILLE
173. TRANSFER GRILLE
174. WEATHER LOUVER
175. MEASURE ON SITE
176. NOT TO SCALE
177. TRANSFORMATION OF DUCT
178. WIRE MESH SCREEN
179. COMBES WITH
180. DOOR GRILLE
181. EXTRACT AIR DIFFUSER OR GRILLE
182. TRANSFER GRILLE
183. WEATHER LOUVER
184. MEASURE ON SITE
185. NOT TO SCALE
186. TRANSFORMATION OF DUCT
187. WIRE MESH SCREEN
188. COMBES WITH
189. DOOR GRILLE
190. EXTRACT AIR DIFFUSER OR GRILLE
191. TRANSFER GRILLE
192. WEATHER LOUVER
193. MEASURE ON SITE
194. NOT TO SCALE
195. TRANSFORMATION OF DUCT
196. WIRE MESH SCREEN
197. COMBES WITH
198. DOOR GRILLE
199. EXTRACT AIR DIFFUSER OR GRILLE
200. TRANSFER GRILLE
201. WEATHER LOUVER
202. MEASURE ON SITE
203. NOT TO SCALE
204. TRANSFORMATION OF DUCT
205. WIRE MESH SCREEN
206. COMBES WITH
207. DOOR GRILLE
208. EXTRACT AIR DIFFUSER OR GRILLE
209. TRANSFER GRILLE
210. WEATHER LOUVER
211. MEASURE ON SITE
212. NOT TO SCALE
213. TRANSFORMATION OF DUCT
214. WIRE MESH SCREEN
215. COMBES WITH
216. DOOR GRILLE
217. EXTRACT AIR DIFFUSER OR GRILLE
218. TRANSFER GRILLE
219. WEATHER LOUVER
220. MEASURE ON SITE
221. NOT TO SCALE
222. TRANSFORMATION OF DUCT
223. WIRE MESH SCREEN
224. COMBES WITH
225. DOOR GRILLE
226. EXTRACT AIR DIFFUSER OR GRILLE
227. TRANSFER GRILLE
228. WEATHER LOUVER
229. MEASURE ON SITE
230. NOT TO SCALE
231. TRANSFORMATION OF DUCT
232. WIRE MESH SCREEN
233. COMBES WITH
234. DOOR GRILLE
235. EXTRACT AIR DIFFUSER OR GRILLE
236. TRANSFER GRILLE
237. WEATHER LOUVER
238. MEASURE ON SITE
239. NOT TO SCALE
240. TRANSFORMATION OF DUCT
241. WIRE MESH SCREEN
242. COMBES WITH
243. DOOR GRILLE
244. EXTRACT AIR DIFFUSER OR GRILLE
245. TRANSFER GRILLE
246. WEATHER LOUVER
247. MEASURE ON SITE
248. NOT TO SCALE
249. TRANSFORMATION OF DUCT
250. WIRE MESH SCREEN
251. COMBES WITH
252. DOOR GRILLE
253. EXTRACT AIR DIFFUSER OR GRILLE
254. TRANSFER GRILLE
255. WEATHER LOUVER
256. MEASURE ON SITE
257. NOT TO SCALE
258. TRANSFORMATION OF DUCT
259. WIRE MESH SCREEN
260. COMBES WITH
261. DOOR GRILLE
262. EXTRACT AIR DIFFUSER OR GRILLE
263. TRANSFER GRILLE
264. WEATHER LOUVER
265. MEASURE ON SITE
266. NOT TO SCALE
267. TRANSFORMATION OF DUCT
268. WIRE MESH SCREEN
269. COMBES WITH
270. DOOR GRILLE
271. EXTRACT AIR DIFFUSER OR GRILLE
272. TRANSFER GRILLE
273. WEATHER LOUVER
274. MEASURE ON SITE
275. NOT TO SCALE
276. TRANSFORMATION OF DUCT
277. WIRE MESH SCREEN
278. COMBES WITH
279. DOOR GRILLE
280. EXTRACT AIR DIFFUSER OR GRILLE
281. TRANSFER GRILLE
282. WEATHER LOUVER
283. MEASURE ON SITE
284. NOT TO SCALE
285. TRANSFORMATION OF DUCT
286. WIRE MESH SCREEN
287. COMBES WITH
288. DOOR GRILLE
289. EXTRACT AIR DIFFUSER OR GRILLE
290. TRANSFER GRILLE
291. WEATHER LOUVER
292. MEASURE ON SITE
293. NOT TO SCALE
294. TRANSFORMATION OF DUCT
295. WIRE MESH SCREEN
296. COMBES WITH
297. DOOR GRILLE
298. EXTRACT AIR DIFFUSER OR GRILLE
299. TRANSFER GRILLE
300. WEATHER LOUVER
301. MEASURE ON SITE
302. NOT TO SCALE
303. TRANSFORMATION OF DUCT
304. WIRE MESH SCREEN
305. COMBES WITH
306. DOOR GRILLE
307. EXTRACT AIR DIFFUSER OR GRILLE
308. TRANSFER GRILLE
309. WEATHER LOUVER
310. MEASURE ON SITE
311. NOT TO SCALE
312. TRANSFORMATION OF DUCT
313. WIRE MESH SCREEN
314. COMBES WITH
315. DOOR GRILLE
316. EXTRACT AIR DIFFUSER OR GRILLE
317. TRANSFER GRILLE
318. WEATHER LOUVER
319. MEASURE ON SITE
320. NOT TO SCALE
321. TRANSFORMATION OF DUCT
322. WIRE MESH SCREEN
323. COMBES WITH
324. DOOR GRILLE
325. EXTRACT AIR DIFFUSER OR GRILLE
326. TRANSFER GRILLE
327. WEATHER LOUVER
328. MEASURE ON SITE
329. NOT TO SCALE
330. TRANSFORMATION OF DUCT
331. WIRE MESH SCREEN
332. COMBES WITH
333. DOOR GRILLE
334. EXTRACT AIR DIFFUSER OR GRILLE
335. TRANSFER GRILLE
336. WEATHER LOUVER
337. MEASURE ON SITE
338. NOT TO SCALE
339. TRANSFORMATION OF DUCT
340. WIRE MESH SCREEN
341. COMBES WITH
342. DOOR GRILLE
343. EXTRACT AIR DIFFUSER OR GRILLE
344. TRANSFER GRILLE
345. WEATHER LOUVER
346. MEASURE ON SITE
347. NOT TO SCALE
348. TRANSFORMATION OF DUCT
349. WIRE MESH SCREEN
350. COMBES WITH
351. DOOR GRILLE
352. EXTRACT AIR DIFFUSER OR GRILLE
353. TRANSFER GRILLE
354. WEATHER LOUVER
355. MEASURE ON SITE
356. NOT TO SCALE
357. TRANSFORMATION OF DUCT
358. WIRE MESH SCREEN
359. COMBES WITH
360. DOOR GRILLE
361. EXTRACT AIR DIFFUSER OR GRILLE
362. TRANSFER GRILLE
363. WEATHER LOUVER
364. MEASURE ON SITE
365. NOT TO SCALE
366. TRANSFORMATION OF DUCT
367. WIRE MESH SCREEN
368. COMBES WITH
369. DOOR GRILLE
370. EXTRACT AIR DIFFUSER OR GRILLE
371. TRANSFER GRILLE
372. WEATHER LOUVER
373. MEASURE ON SITE
374. NOT TO SCALE
375. TRANSFORMATION OF DUCT
376. WIRE MESH SCREEN
377. COMBES WITH
378. DOOR GRILLE
379. EXTRACT AIR DIFFUSER OR GRILLE
380. TRANSFER GRILLE
381. WEATHER LOUVER
382. MEASURE ON SITE
383. NOT TO SCALE
384. TRANSFORMATION OF DUCT
385. WIRE MESH SCREEN
386. COMBES WITH
387. DOOR GRILLE
388. EXTRACT AIR DIFFUSER OR GRILLE
389. TRANSFER GRILLE
390. WEATHER LOUVER
391. MEASURE ON SITE
392. NOT TO SCALE
393. TRANSFORMATION OF DUCT
394. WIRE MESH SCREEN
395. COMBES WITH
396. DOOR GRILLE
397. EXTRACT AIR DIFFUSER OR GRILLE
398. TRANSFER GRILLE
399. WEATHER LOUVER
400. MEASURE ON SITE
401. NOT TO SCALE
402. TRANSFORMATION OF DUCT
403. WIRE MESH SCREEN
404. COMBES WITH
405. DOOR GRILLE
406. EXTRACT AIR DIFFUSER OR GRILLE
407. TRANSFER GRILLE
408. WEATHER LOUVER
409. MEASURE ON SITE
410. NOT TO SCALE
411. TRANSFORMATION OF DUCT
412. WIRE MESH SCREEN
413. COMBES WITH
414. DOOR GRILLE
415. EXTRACT AIR DIFFUSER OR GRILLE
416. TRANSFER GRILLE
417. WEATHER LOUVER
418. MEASURE ON SITE
419. NOT TO SCALE
420. TRANSFORMATION OF DUCT
421. WIRE MESH SCREEN
422. COMBES WITH
423. DOOR GRILLE
424. EXTRACT AIR DIFFUSER OR GRILLE
425. TRANSFER GRILLE
426. WEATHER LOUVER
427. MEASURE ON SITE
428. NOT TO SCALE
429. TRANSFORMATION OF DUCT
430. WIRE MESH SCREEN
431. COMBES WITH
432. DOOR GRILLE
433. EXTRACT AIR DIFFUSER OR GRILLE
434. TRANSFER GRILLE
435. WEATHER LOUVER
436. MEASURE ON SITE
437. NOT TO SCALE
438. TRANSFORMATION OF DUCT
439. WIRE MESH SCREEN
440. COMBES WITH
441. DOOR GRILLE
442. EXTRACT AIR DIFFUSER OR GRILLE
443. TRANSFER GRILLE
444. WEATHER LOUVER
445. MEASURE ON SITE
446. NOT TO SCALE
447. TRANSFORMATION OF DUCT
448. WIRE MESH SCREEN
449. COMBES WITH
450. DOOR GRILLE
451. EXTRACT AIR DIFFUSER OR GRILLE
452. TRANSFER GRILLE
453. WEATHER LOUVER
454. MEASURE ON SITE
455. NOT TO SCALE
456. TRANSFORMATION OF DUCT
457. WIRE MESH SCREEN
458. COMBES WITH
459. DOOR GRILLE
460. EXTRACT AIR DIFFUSER OR GRILLE
461. TRANSFER GRILLE
462. WEATHER LOUVER
463. MEASURE ON SITE
464. NOT TO SCALE
465. TRANSFORMATION OF DUCT
466. WIRE MESH SCREEN
467. COMBES WITH
468. DOOR GRILLE
469. EXTRACT AIR DIFFUSER OR GRILLE
470. TRANSFER GRILLE
471. WEATHER LOUVER
472. MEASURE ON SITE
473. NOT TO SCALE
474. TRANSFORMATION OF DUCT
475. WIRE MESH SCREEN
476. COMBES WITH
477. DOOR GRILLE
478. EXTRACT AIR DIFFUSER OR GRILLE
479. TRANSFER GRILLE
480. WEATHER LOUVER
481. MEASURE ON SITE
482. NOT TO SCALE
483. TRANSFORMATION OF DUCT
484. WIRE MESH SCREEN
485. COMBES WITH
486. DOOR GRILLE
487. EXTRACT AIR DIFFUSER OR GRILLE
488. TRANSFER GRILLE
489. WEATHER LOUVER
490. MEASURE ON SITE
491. NOT TO SCALE
492. TRANSFORMATION OF DUCT
493. WIRE MESH SCREEN
494. COMBES WITH
495. DOOR GRILLE
496. EXTRACT AIR DIFFUSER OR GRILLE
497. TRANSFER GRILLE
498. WEATHER LOUVER
499. MEASURE ON SITE
500. NOT TO SCALE
501. TRANSFORMATION OF DUCT
502. WIRE MESH SCREEN
503. COMBES WITH
504. DOOR GRILLE
505. EXTRACT AIR DIFFUSER OR GRILLE
506. TRANSFER GRILLE
507. WEATHER LOUVER
508. MEASURE ON SITE
509. NOT TO SCALE
510. TRANSFORMATION OF DUCT
511. WIRE MESH SCREEN
512. COMBES WITH
513. DOOR GRILLE
514. EXTRACT AIR DIFFUSER OR GRILLE
515. TRANSFER GRILLE
516. WEATHER LOUVER
517. MEASURE ON SITE
518. NOT TO SCALE
519. TRANSFORMATION OF DUCT
520. WIRE MESH SCREEN
521. COMBES WITH
522. DOOR GRILLE
523. EXTRACT AIR DIFFUSER OR GRILLE
524. TRANSFER GRILLE
525. WEATHER LOUVER
526. MEASURE ON SITE
527. NOT TO SCALE
528. TRANSFORMATION OF DUCT
529. WIRE MESH SCREEN
530. COMBES WITH
531. DOOR GRILLE
532. EXTRACT AIR DIFFUSER OR GRILLE
533. TRANSFER GRILLE
534. WEATHER LOUVER
535. MEASURE ON SITE
536. NOT TO SCALE
537. TRANSFORMATION OF DUCT
538. WIRE MESH SCREEN
539. COMBES WITH
540. DOOR GRILLE
541. EXTRACT AIR DIFFUSER OR GRILLE
542. TRANSFER GRILLE
543. WEATHER LOUVER
544. MEASURE ON SITE
545. NOT TO SCALE
546. TRANSFORMATION OF DUCT
547. WIRE MESH SCREEN
548. COMBES WITH
549. DOOR GRILLE
550. EXTRACT AIR DIFFUSER OR GRILLE
551. TRANSFER GRILLE
552. WEATHER LOUVER
553. MEASURE ON SITE
554. NOT TO SCALE
555. TRANSFORMATION OF DUCT
556. WIRE MESH SCREEN
557. COMBES WITH
558. DOOR GRILLE
559. EXTRACT AIR DIFFUSER OR GRILLE
560. TRANSFER GRILLE
561. WEATHER LOUVER
562. MEASURE ON SITE
563. NOT TO SCALE
564. TRANSFORMATION OF DUCT
565. WIRE MESH SCREEN
566. COMBES WITH
567. DOOR GRILLE
568. EXTRACT AIR DIFFUSER OR GRILLE
569. TRANSFER GRILLE
570. WEATHER LOUVER
571. MEASURE ON SITE
572. NOT TO SCALE
573. TRANSFORMATION OF DUCT
574. WIRE MESH SCREEN
575. COMBES WITH
576. DOOR GRILLE
577. EXTRACT AIR DIFFUSER OR GRILLE
578. TRANSFER GRILLE
579. WEATHER LOUVER
580. MEASURE ON SITE
581. NOT TO SCALE
582. TRANSFORMATION OF DUCT
583. WIRE MESH SCREEN
584. COMBES WITH
585. DOOR GRILLE
586. EXTRACT AIR DIFFUSER OR GRILLE
587. TRANSFER GRILLE
588. WEATHER LOUVER
589. MEASURE ON SITE
590. NOT TO SCALE
591. TRANSFORMATION OF DUCT
592. WIRE MESH SCREEN
593. COMBES WITH
594. DOOR GRILLE
595. EXTRACT AIR DIFFUSER OR GRILLE
596. TRANSFER GRILLE
597. WEATHER LOUVER
598. MEASURE ON SITE
599. NOT TO SCALE
600. TRANSFORMATION OF DUCT
601. WIRE MESH SCREEN
602. COMBES WITH
603. DOOR GRILLE
604. EXTRACT AIR DIFFUSER OR GRILLE
605. TRANSFER GRILLE
606. WEATHER LOUVER
607. MEASURE ON SITE
608. NOT TO SCALE
609. TRANSFORMATION OF DUCT
610. WIRE MESH SCREEN
611. COMBES WITH
612. DOOR GRILLE
613. EXTRACT AIR DIFFUSER OR GRILLE
614. TRANSFER GRILLE
615. WEATHER LOUVER
616. MEASURE ON SITE
617. NOT TO SCALE
618. TRANSFORMATION OF DUCT
619. WIRE MESH SCREEN
620. COMBES WITH
621. DOOR GRILLE
622. EXTRACT AIR DIFFUSER OR GRILLE
623. TRANSFER GRILLE
624. WEATHER LOUVER
625. MEASURE ON SITE
626. NOT TO SCALE
627. TRANSFORMATION OF DUCT
628. WIRE MESH SCREEN
629. COMBES WITH
630. DOOR GRILLE
631. EXTRACT AIR DIFFUSER OR GRILLE
632. TRANSFER GRILLE
633. WEATHER LOUVER
634. MEASURE ON SITE
635. NOT TO SCALE
636. TRANSFORMATION OF DUCT
637. WIRE MESH SCREEN
638. COMBES WITH
639. DOOR GRILLE
640. EXTRACT AIR DIFFUSER OR GRILLE
641. TRANSFER GRILLE
642. WEATHER LOUVER
643. MEASURE ON SITE
644. NOT TO SCALE
645. TRANSFORMATION OF DUCT
646. WIRE MESH SCREEN
647. COMBES WITH
648. DOOR GRILLE
649. EXTRACT AIR DIFFUSER OR GRILLE
650. TRANSFER GRILLE
651. WEATHER LOUVER
652. MEASURE ON SITE
653. NOT TO SCALE
654. TRANSFORMATION OF DUCT
655. WIRE MESH SCREEN
656. COMBES WITH
657. DOOR GRILLE
658. EXTRACT AIR DIFFUSER OR GRILLE
659. TRANSFER GRILLE
660. WEATHER LOUVER
661. MEASURE ON SITE
662. NOT TO SCALE
663. TRANSFORMATION OF DUCT
664. WIRE MESH SCREEN
665. COMBES WITH
666. DOOR GRILLE
667. EXTRACT AIR DIFFUSER OR GRILLE
668. TRANSFER GRILLE
669. WEATHER LOUVER
670. MEASURE ON SITE
671. NOT TO SCALE
672. TRANSFORMATION OF DUCT
673. WIRE MESH SCREEN
674. COMBES WITH
675. DOOR GRILLE
676. EXTRACT AIR DIFFUSER OR GRILLE
677. TRANSFER GRILLE
678. WEATHER LOUVER
679. MEASURE ON SITE
680. NOT TO SCALE
681. TRANSFORMATION OF DUCT
682. WIRE MESH SCREEN
683. COMBES WITH
684. DOOR GRILLE
685. EXTRACT AIR DIFFUSER OR GRILLE
686. TRANSFER GRILLE
687. WEATHER LOUVER
688. MEASURE ON SITE
689. NOT TO SCALE
690. TRANSFORMATION OF DUCT
691. WIRE MESH SCREEN
692. COMBES WITH
693. DOOR GRILLE
694. EXTRACT AIR DIFFUSER OR GRILLE
695. TRANSFER GRILLE
696. WEATHER LOUVER
697. MEASURE ON SITE
698. NOT TO SCALE
699. TRANSFORMATION OF DUCT
700. WIRE MESH SCREEN
701. COMBES WITH
702. DOOR GRILLE
703. EXTRACT AIR DIFFUSER OR GRILLE
704. TRANSFER GRILLE
705. WEATHER LOUVER
706. MEASURE ON SITE
707. NOT TO SCALE
708. TRANSFORMATION OF DUCT
709. WIRE MESH SCREEN
710. COMBES WITH
711. DOOR GRILLE
712. EXTRACT AIR DIFFUSER OR GRILLE
713. TRANSFER GRILLE
714. WEATHER LOUVER
715. MEASURE ON SITE
716. NOT TO SCALE
717. TRANSFORMATION OF DUCT
718. WIRE MESH SCREEN
719. COMBES WITH
720. DOOR GRILLE
721. EXTRACT AIR DIFFUSER OR GRILLE
722. TRANSFER GRILLE
723. WEATHER LOUVER
724. MEASURE ON SITE
725. NOT TO SCALE
726. TRANSFORMATION OF DUCT
727. WIRE MESH SCREEN
728. COMBES WITH
729. DOOR GRILLE
730. EXTRACT AIR DIFFUSER OR GRILLE
731. TRANSFER GRILLE
732. WEATHER LOUVER
733. MEASURE ON SITE
734. NOT TO SCALE
735. TRANSFORMATION OF DUCT
736. WIRE MESH SCREEN
737. COMBES WITH
738. DOOR GRILLE
739. EXTRACT AIR DIFFUSER OR GRILLE
740. TRANSFER GRILLE
741. WEATHER LOUVER
742. MEASURE ON SITE
743. NOT TO SCALE
744. TRANSFORMATION OF DUCT
745. WIRE MESH SCREEN
746. COMBES WITH
747. DOOR GRILLE
748. EXTRACT AIR DIFFUSER OR GRILLE
749. TRANSFER GRILLE
750. WEATHER LOUVER
751. MEASURE ON SITE
752. NOT TO SCALE
753. TRANSFORMATION OF DUCT
754. WIRE MESH SCREEN
755. COMBES WITH
756. DOOR GRILLE
757. EXTRACT AIR DIFFUSER OR GRILLE
758. TRANSFER GRILLE
759. WEATHER LOUVER
760. MEASURE ON SITE
761. NOT TO SCALE
762. TRANSFORMATION OF DUCT
763. WIRE MESH SCREEN
764. COMBES WITH
765. DOOR GRILLE
766. EXTRACT AIR DIFFUSER OR GRILLE
767. TRANSFER GRILLE
768. WEATHER LOUVER
769. MEASURE ON SITE
770. NOT TO SCALE
771. TRANSFORMATION OF DUCT
772. WIRE MESH SCREEN
773. COMBES WITH
774. DOOR GRILLE
775. EXTRACT AIR DIFFUSER OR GRILLE
776. TRANSFER GRILLE
777. WEATHER LOUVER
778. MEASURE ON SITE
779. NOT TO SCALE
780. TRANSFORMATION OF DUCT
781. WIRE MESH SCREEN
782. COMBES WITH
783. DOOR GRILLE
784. EXTRACT AIR DIFFUSER OR GRILLE
785. TRANSFER GRILLE
786. WEATHER LOUVER
787. MEASURE ON SITE
788. NOT TO SCALE
789. TRANSFORMATION OF DUCT
790. WIRE MESH SCREEN
791. COMBES WITH
792. DOOR GRILLE
793. EXTRACT AIR DIFFUSER OR GRILLE
794. TRANSFER GRILLE
795. WEATHER LOUVER
796. MEASURE ON SITE
797. NOT TO SCALE
798. TRANSFORMATION OF DUCT
799. WIRE MESH SCREEN
800. COMBES WITH
801. DOOR GRILLE
802. EXTRACT AIR DIFFUSER OR GRILLE
803. TRANSFER GRILLE
804. WEATHER LOUVER
805. MEASURE ON SITE
806. NOT TO SCALE
807. TRANSFORMATION OF DUCT
808. WIRE MESH SCREEN
809. COMBES WITH
810. DOOR GRILLE
811. EXTRACT AIR DIFFUSER OR GRILLE
812. TRANSFER GRILLE
813. WEATHER LOUVER
814. MEASURE ON SITE
815. NOT TO SCALE
816. TRANSFORMATION OF DUCT
817. WIRE MESH SCREEN
818. COMBES WITH
819. DOOR GRILLE
820. EXTRACT AIR DIFFUSER OR GRILLE
821. TRANSFER GRILLE
822. WEATHER LOUVER
823. MEASURE ON SITE
824. NOT TO SCALE
825. TRANSFORMATION OF DUCT
826. WIRE MESH SCREEN
827. COMBES WITH
828. DOOR GRILLE
829. EXTRACT AIR DIFFUSER OR GRILLE
830. TRANSFER GRILLE
831. WEATHER LOUVER
832. MEASURE ON SITE
833. NOT TO SCALE
834. TRANSFORMATION OF DUCT
835. WIRE MESH SCREEN
836. COMBES WITH
837. DOOR GRILLE
838. EXTRACT AIR DIFFUSER OR GRILLE
839. TRANSFER GRILLE
840. WEATHER LOUVER
841. MEASURE ON SITE
842. NOT TO SCALE
843. TRANSFORMATION OF DUCT
844. WIRE MESH SCREEN
845. COMBES WITH
846. DOOR GRILLE
847. EXTRACT AIR DIFFUSER OR GRILLE
848. TRANSFER GRILLE
849. WEATHER LOUVER
850. MEASURE ON SITE
851. NOT TO SCALE
852. TRANSFORMATION OF DUCT
853. WIRE MESH SCREEN
854. COMBES WITH
855. DOOR GRILLE
856. EXTRACT AIR DIFFUSER OR GRILLE
857. TRANSFER GRILLE
858. WEATHER LOUVER
859. MEASURE ON SITE
860. NOT TO SCALE
861. TRANSFORMATION OF DUCT
862. WIRE MESH SCREEN
863. COMBES WITH
864. DOOR GRILLE
865. EXTRACT AIR DIFFUSER OR GRILLE
866. TRANSFER GRILLE
867. WEATHER LOUVER
868. MEASURE ON SITE
869. NOT TO SCALE
870. TRANSFORMATION OF DUCT
871. WIRE MESH SCREEN
872. COMBES WITH
873. DOOR GRILLE
874. EXTRACT AIR DIFFUSER OR GRILLE
875. TRANSFER GRILLE
876. WEATHER LOUVER
877. MEASURE ON SITE
878. NOT TO SCALE
879. TRANSFORMATION OF DUCT
880. WIRE MESH SCREEN
881. COMBES WITH
882. DOOR GRILLE
883. EXTRACT AIR DIFFUSER OR GRILLE
884. TRANSFER GRILLE
885. WEATHER LOUVER
886. MEASURE ON SITE
887. NOT TO SCALE
888. TRANSFORMATION OF DUCT
889. WIRE MESH SCREEN
890. COMBES WITH
891. DOOR GRILLE
892. EXTRACT AIR DIFFUSER OR GRILLE
893. TRANSFER GRILLE
894. WEATHER LOUVER
895. MEASURE ON SITE
896. NOT TO SCALE
897. TRANSFORMATION OF DUCT
898. WIRE MESH SCREEN
899. COMBES WITH
900. DOOR GRILLE
901. EXTRACT AIR DIFFUSER OR GRILLE
902. TRANSFER GRILLE
903. WEATHER LOUVER
904. MEASURE ON SITE
905. NOT TO SCALE
906. TRANSFORMATION OF DUCT
907. WIRE MESH SCREEN